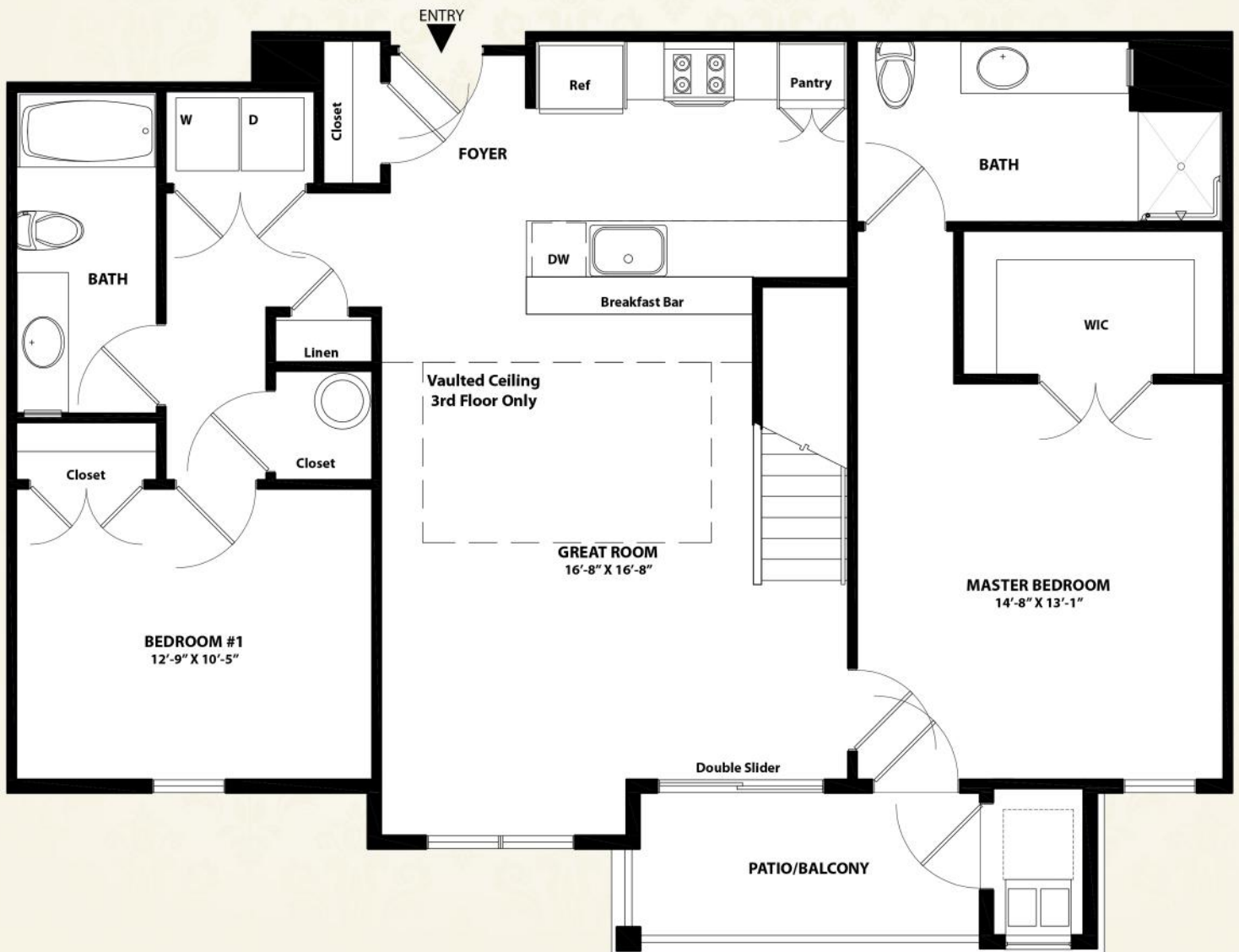




**BARCLAY GLEN NORTH**  
APARTMENTS

*Gloucester Front*

1st, 2nd, and 3rd Floor, 2 Bedrooms - 2 Baths  
1215 sq.ft.



Floorplan details vary from residence to residence and are not necessarily built exactly as indicated in this brochure. Continuing a policy of research and development, Barclay Glen North, LLC must reserve the right to make modifications in design, terms and products without notice or obligations. The design and documents of Barclay Glen North Apartments are copyrighted. We have enforced and will continue to enforce our federal copyrights to protect our investment. Barclay Glen North, LLC is not responsible for any errors and/or omissions. All sizes and sq. ft. are approximate and for identification purposes only.